

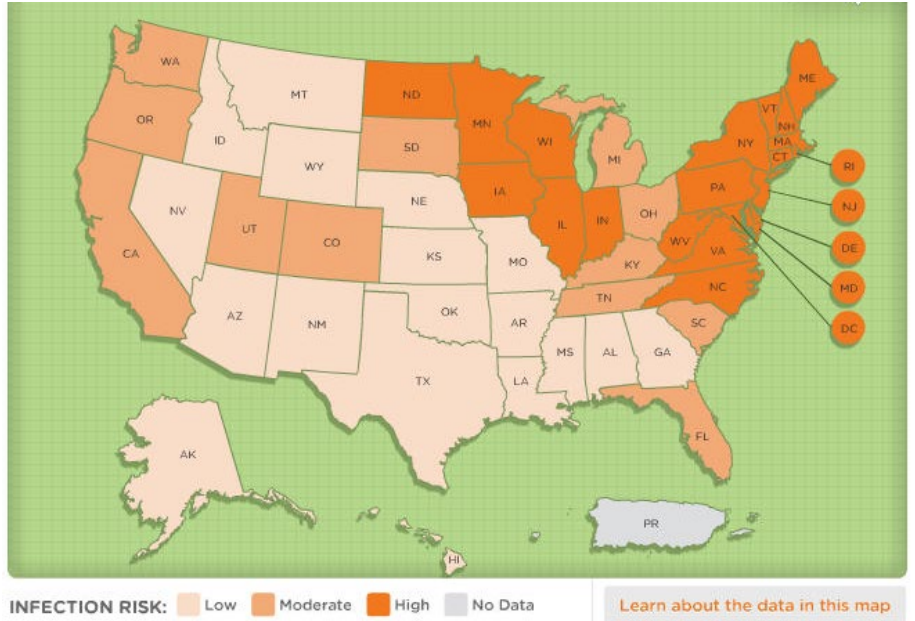


Lyme Disease

Chances are your dog may be at risk.

In 2007, Lyme disease was the cause of most pet insurance claims for infectious diseases. In endemic areas, 41% or more of dogs were infected.

Lyme disease has been diagnosed in humans in all 50 states, and in dogs in the 48 contiguous states.



You can minimize the threat to your dog.

Avoid the real costs of treatment by using preventative measures.

Typical Treatment can be costly

- Expense of antibiotics
- Veterinary visits and cost of diagnosis and treatment

Prevention can be easy

- Brush your dog after being outside
- Examine your dog daily for ticks when the temperature is 40°F or warmer outside
- Remove any ticks you find with tweezers
- Ask your Veterinarian about tick control and effective insect repellents
- Vaccinate your dog every year

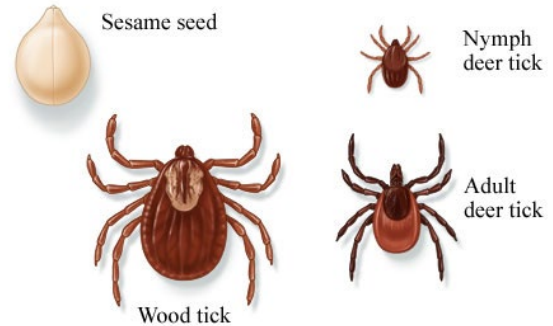
Be proactive through prevention

Vaccination can help prevent your dog from being infected with Lyme disease

- Generates protective antibodies
- Antibodies from vaccination can kill the bacteria that cause Lyme disease as ticks feed
- Most effective when first given at an early age
- Must be given once a year

The dangers are real

- Fever
- Swelling of the joints
- Pain
- Loss of appetite
- Constant tiredness
- Arthritis
- Lameness in the limb that is closest to the site of tick attachment



In rare instances, untreated Lyme disease can lead to more serious health complications such as

- *Heart disease*
- *Neurologic*
- *Kidney disease*

Lyme disease: It's time to assess your dog's risk

- ✓ Are there deer in or around your neighborhood? Y or N
- ✓ Has Lyme disease been found in people and dogs in your area? Y or N
- ✓ Do you live in a wooded area or near tall brush where ticks breed? Y or N
- ✓ Do you take your dog for walks, hikes, camping, picnicking, hunting, or fishing? Y or N
- ✓ Do you and your dog travel to areas that have a high risk of Lyme disease? Y or N

If you answered “yes” to any of these questions, talk to your veterinarian about vaccination today.